

Supporting Information for:

Antcin B and its Ester Derivative from *Antrodia camphorata* Induce Apoptosis in Hepatocellular Carcinoma Cells Involves Enhancing Oxidative Stress Coincident with Activation of Intrinsic and Extrinsic Apoptotic Pathway

Yun-Chih Hsieh, Yerra Koteswara Rao, Jacqueline Whang-Peng, Chi-Ying F. Huang, Song-Kun Shyue, Shih-Lan Hsu, and Yew-Min Tzeng

E-mail: ymtzeng@cyut.edu.tw

Table of Contents

| | | |
|----|---|---|
| 1. | Figure S1. ^1H NMR spectrum of methylantcinate B (MAB) | 2 |
| 2. | Figure S2. ^{13}C NMR spectrum of methylantcinate B (MAB) | 2 |
| 3. | Figure S3. DEPT spectrum of methylantcinate B (MAB) | 3 |
| 4. | Figure S4. ^1H NMR spectrum of antcin B (AB) | 3 |
| 5. | Figure S5. ^{13}C NMR spectrum of antcin B (AB) | 4 |
| 6. | Figure S6. DEPT spectrum of antcin B (AB) | 4 |

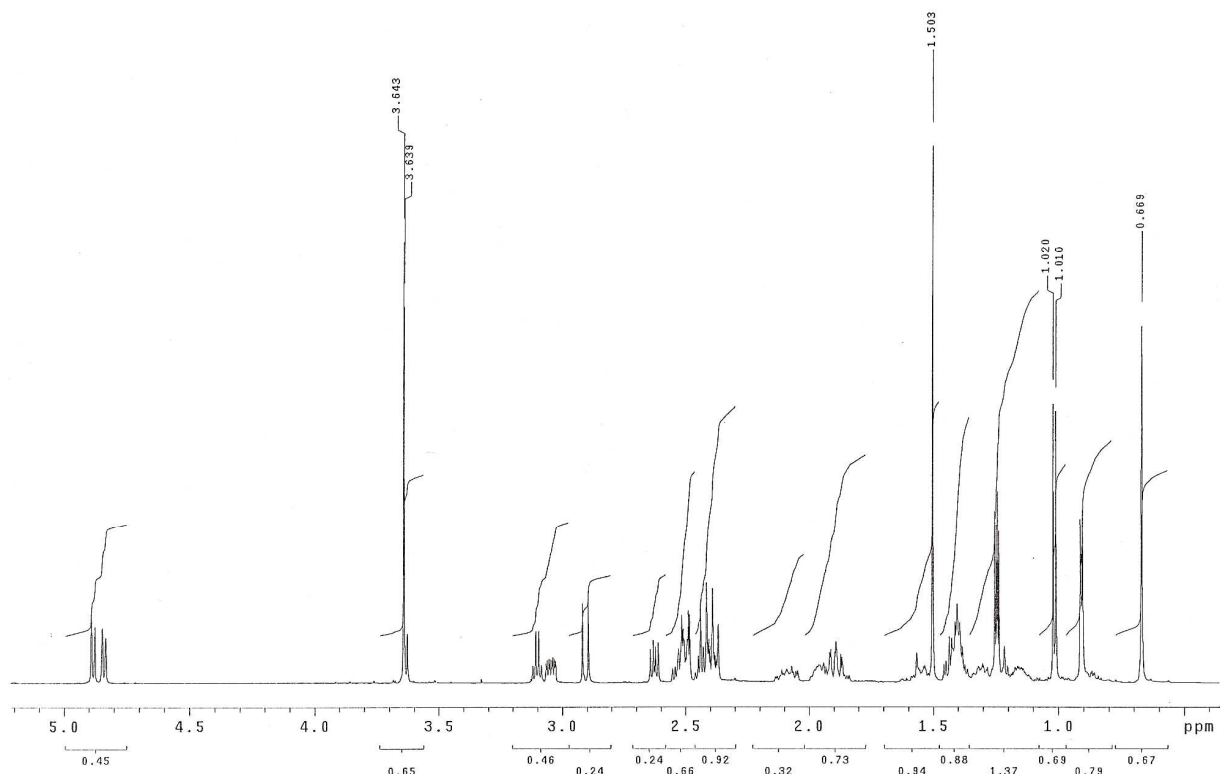


Figure S1. ^1H NMR spectrum of methylantcinate B (MAB).

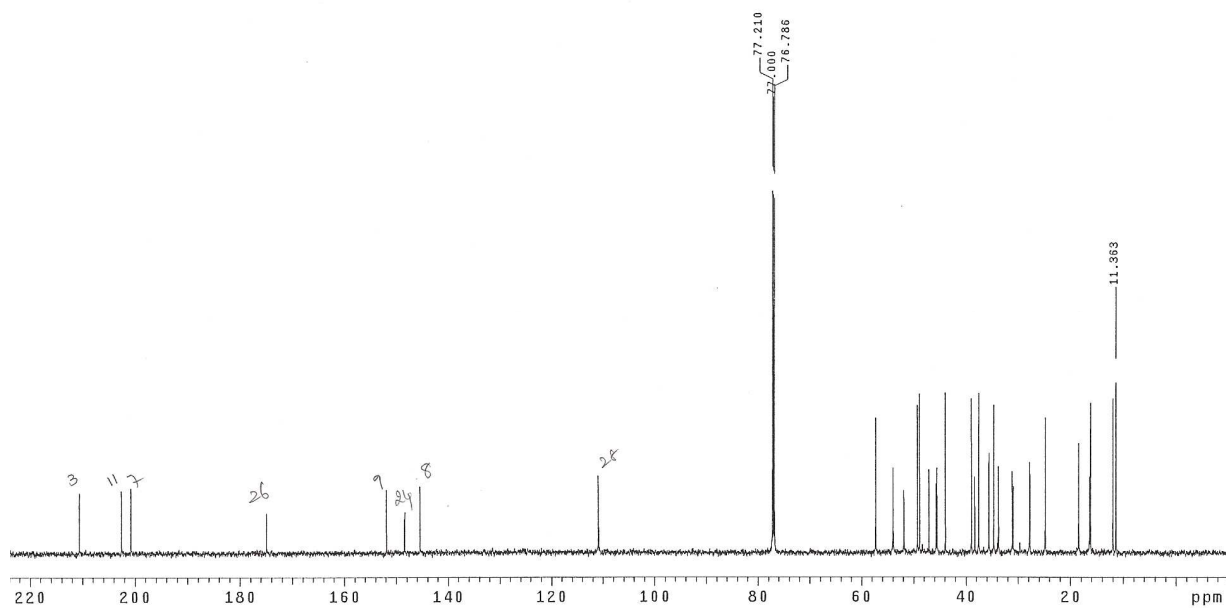


Figure S2. ^{13}C NMR spectrum of methylantcinate B (MAB)

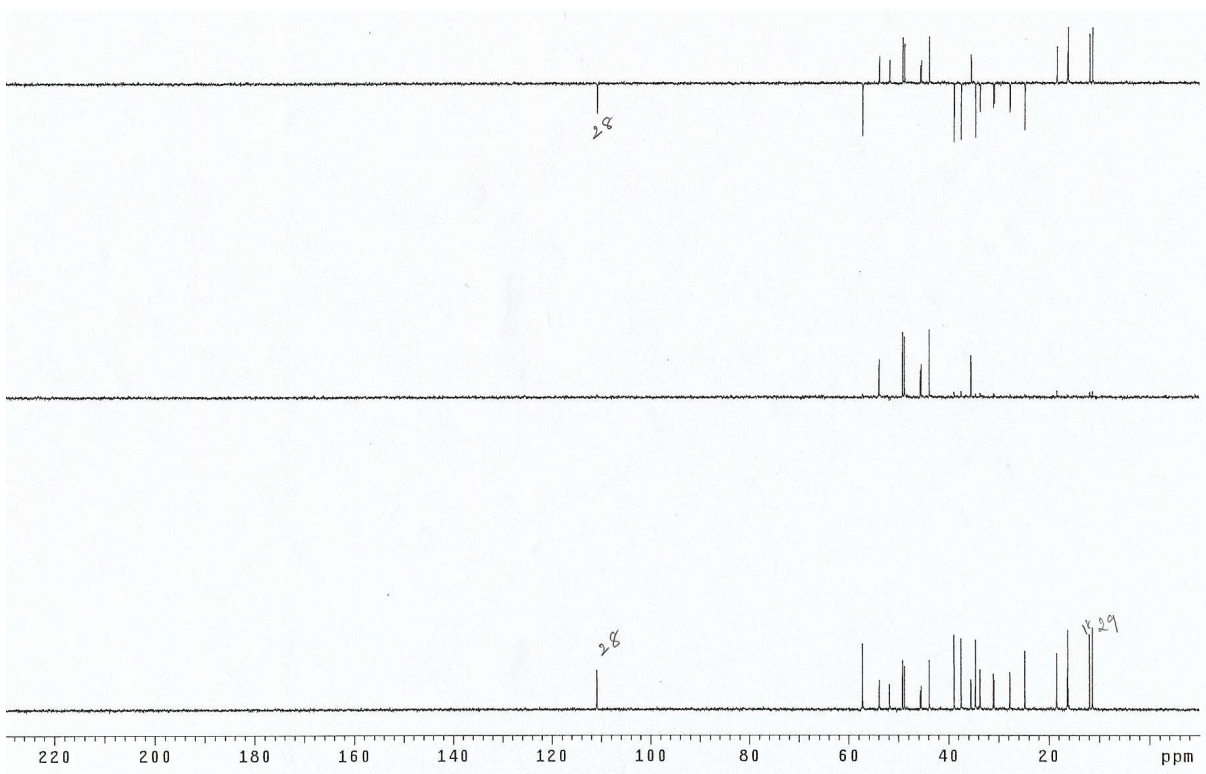


Figure S3. DEPT spectrum of methylantcinate B (MAB)

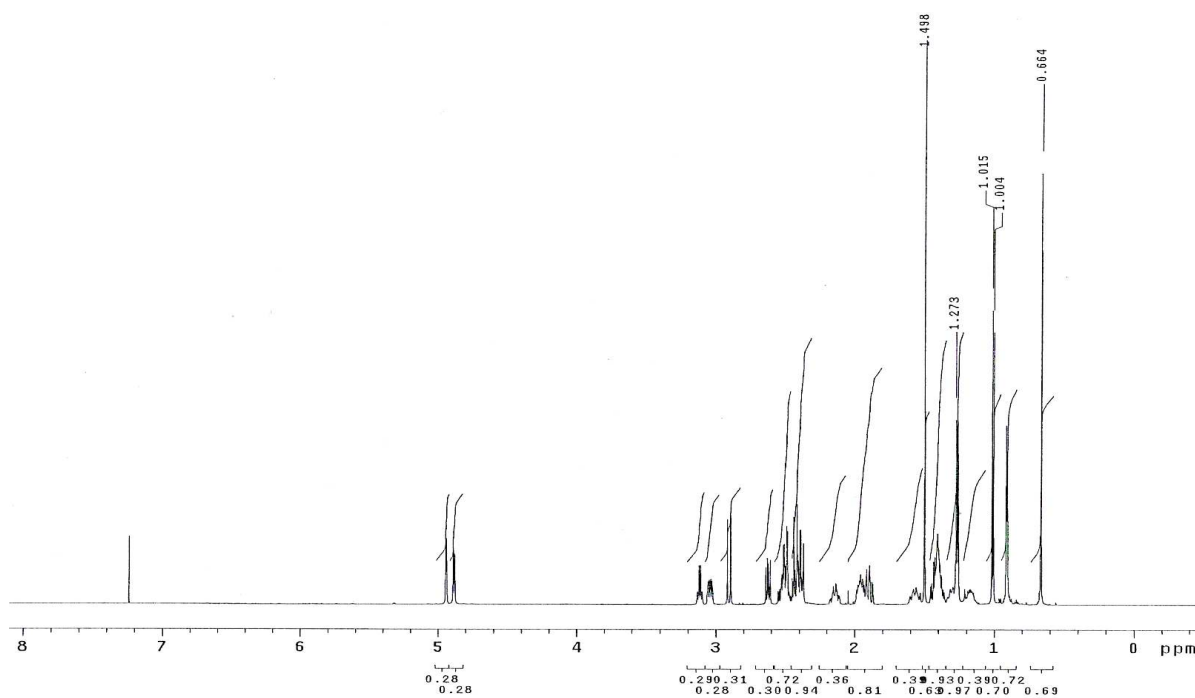


Figure S4. ^1H NMR spectrum of antcin B (AB)

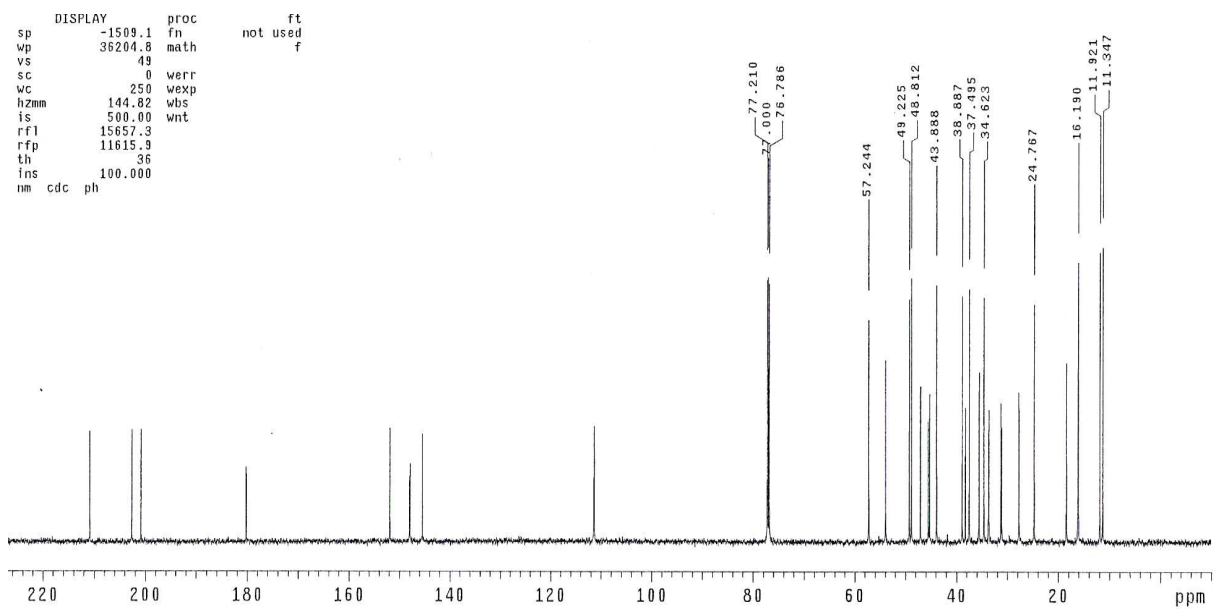


Figure S5. ^{13}C NMR spectrum of antcin B (AB)

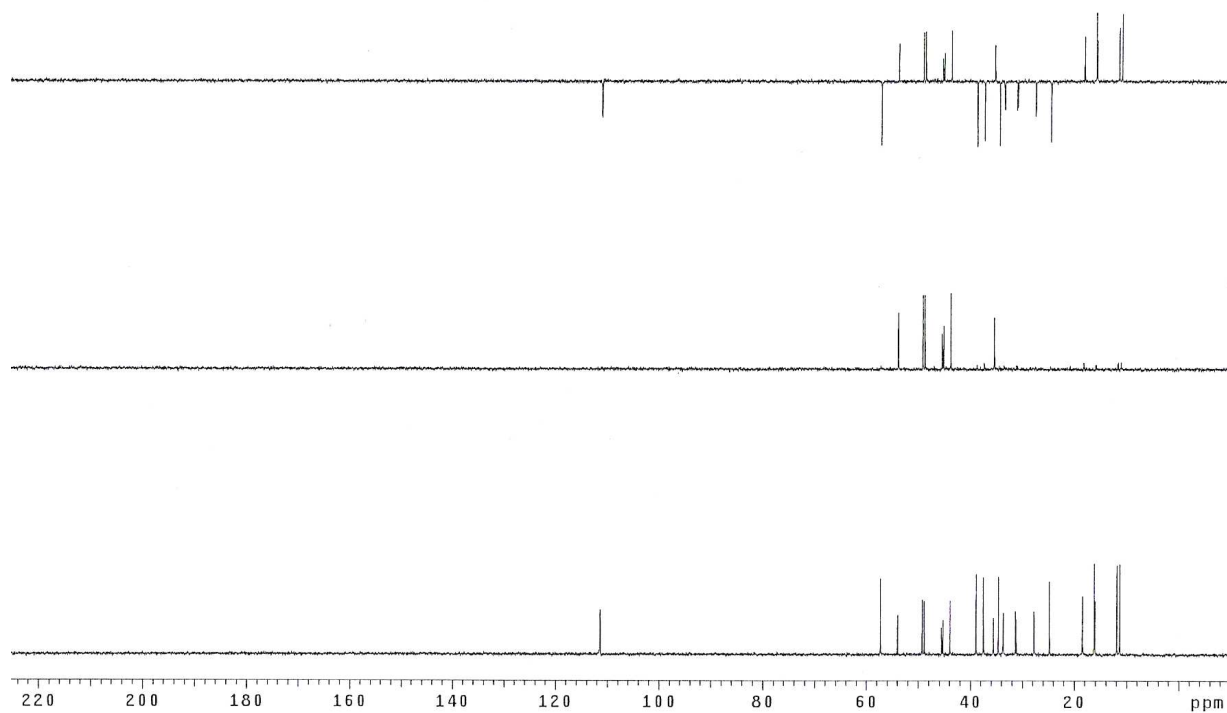


Figure S6. DEPT spectrum of antcin B (AB)